



RIVEREDGE NATURE CENTER

BIENNIAL REPORT 2019-20



RIVEREDGE
NATURE CENTER

A Letter From **LIBBY & JESSICA**

Dear Riveredge Family,

Nature provides a bounty of metaphors for life. From the continuous transitions brought on by the changing of the seasons to the resilience and grit demonstrated by the migrating Monarch butterflies, the natural world can inspire us all.

We are proud to present to you, the Riveredge family of members, supporters, visitors, and learners, a summary of the recent years of Riveredge Nature Center. Just as the forest is continually growing and transforming, Riveredge too has expanded and changed. New audiences have found a place of belonging at Riveredge. The remarkable natural sanctuary was assessed and cataloged by the Milwaukee Public Museum Bioblitz with their largest species count to date. A new public, nature-based K-5 charter school was planted and has taken root. The “Growing Adventures for the Future: The Campaign for Riveredge” capital campaign was launched and several of its projects have already been completed. Education, land conservation, and environmental research continues to flourish.

And, just as a drought may stress and challenge an ecosystem, 2020 challenged Riveredge in many ways. Yet, because of the strong organizational foundation, trusting Board of Directors, creative staff team, and dedicated volunteer groups, Riveredge found ways to thrive. Lessons learned, adaptations realized, and obstacles overcome have propelled Riveredge into 2021 and beyond.

The recent years have also set the stage for the next chapter. Included within these pages is Riveredge’s strategic priorities for the next four years. The gut-checking reality of 2020 has provided a robust trail map for Riveredge’s next steps. This vision continues to challenge us to further discover how a nature center can positively contribute to its community.

Thank you for being part of this all! Without YOUR involvement in Riveredge, none of this is possible. Thank you for continuing to believe in Riveredge and commit to the importance of a nature-rich world and nature-rich lives. The stories presented in these pages are YOUR stories. Be proud. Be optimistic. Be hopeful. Be like the natural world.

With tremendous gratitude,



LIBBY LARSEN

Board of Directors President
First Riveredge Kid



JESSICA JENS

Executive Director
Riveredge Kid Since 2013



Libby Larsen

Jessica Jens ☺

2018-19 • 2019-20 BOARD OF DIRECTORS

Officers

President (2018-19): Ted Neitzke IV
President (2019-20): Libby Larsen
Vice President (2018-19): James Brindley
Secretary (2018-19): Libby Larsen
Secretary (2019-20): Shashank Varma
Treasurer: Dan Lyons

Directors

James Brindley
Todd Bugnacki
Mary Ann Christopher
Jennifer Clearwater
Dan Davis
Dan Dedrick
Timothy Ehlinger
Mike Faley
Nancy Groethe
Thomas Jansen
Becky Jewell
Jeremy Lambie
Libby Larsen
Dan Lyons
David McKinney
Ted Neitzke IV
Kim Pemble
Gaurie Rodman
Liz Stueck-Mullane
Cate Tinker
Shashank Varma
Dawn Wagner



2018-20 STAFF

Administration

Jessica Jens, Executive Director
Tammy Lorge, Business & Human Resources Manager
Patricia Fox, Volunteer & Special Events Manager
Amy Dedow, Volunteer & Special Events Manager
Matt Gaboury, Marketing & Communications Manager
Ed Makowski, Marketing & Communications Manager
Julie Dickson, Administrative Assistant
for Education & Membership

Development

Natalie Dorrlor, Director of Development
Leif Nordstrom, Development Specialist
Melanie Goring, Development Specialist
Renee Buchholz, Development &
Membership Management Assistant

Research & Conservation

Mandie Zopp, Director of Research & Conservation
Matt Smith, Research & Conservation Manager
Phyllis McKenzie, Natural Playspace
Designer, Educator & Land Steward
Keith Hiestand, Building & Grounds Manager
Don Gilmore, Building & Grounds Assistant Manager
Richard (Lefty) Fowler, Building & Grounds Assistant
Eric Oleson, Building & Grounds Assistant
Toddianna Kraemer-Curtiss, Building
& Grounds Assistant
James Hagedorn, Custodian



Education

Sunny Knutson, Director of Education
Carly Hintz, Associate Director of Education
Cassie Bauer, Family & Community Programs Manager
Barbara Hampton, Education Assistant
Steff Merten, Adventure Education Manager
Kacey Tait, Inquiry-Based Curriculum
& Instruction Manager
Rachel Race (Feerick), Scientist in Residence
(West Bend, Cedarburg)
Kendra Swanson, Scientist in Residence (Cedarburg)
Thelma Heidel-Baker, Scientist in Residence
(Cedarburg)
Stephanie Koller, Lead Environmental Educator
Mary Holleback, Senior Naturalist
Patricia Gerber, Community Rivers Program
Coordinator, Environmental Educator

Environmental Educators

Lesley Ammons
Nikki Aterianus
Paige Becht
Moriah Butler
Stu Hannam
Jill Ladwig
Molli Rasmussen
Lynn Schanen
Pam Uihlein
Lauren Wendland
Maddy Witt
Dan Wundrock



Welcome to Riveredge

REDEFINING A NATURE CENTER



FROM THE BEGINNING, THE RIVEREDGE “EXPERIMENT” HAS BEEN ABOUT ENGAGING PEOPLE WITH THE NATURAL WORLD - AND DOING SO IN A WAY THAT IS PERSONALLY TRANSFORMATIONAL AND CULTIVATES A MEANINGFUL CONNECTION TO NATURE.

The founders of Riveredge took a risk. Before almost anyone in the region believed that saving open land was important, the Riveredge founders took a giant leap of faith and started the first independent, non-profit nature center in Southeastern Wisconsin. For more than 50 years, the work of education, land conservation, and environmental research have been the cornerstone of this mission.

Today, Riveredge is a robust, sophisticated, highly functioning, and FUN community nonprofit, focused on nature, made possible by thousands of members, donors, partners, learners, and volunteers. It's made possible by YOU.

AND, TOGETHER, WE CONTINUE TO REIMAGINE AND CHALLENGE THE STATUS QUO OF A NATURE CENTER.

With you, we are contributing to healthy lives, nature-rich communities, and a high quality of life for the region. With YOUR belief and help in challenging the mental model of the role of a nature center within its community, we will continue improving lives, education, communities, and our natural environment throughout Southeastern Wisconsin.



IMPACT BY THE NUMBERS

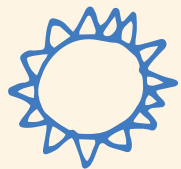


EDUCATION



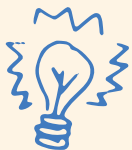
5

Community Rivers
Program communities



550

summer campers



43,000+

learners engaged



60

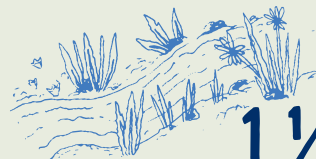
public, nature-based
4-year-old Kindergarten
students

CONSERVATION & RESEARCH



379

acres of restored prairies,
forests, and wetlands



1 ½

miles of
Milwaukee River



2,000

orchid seedlings
propagated



17,686

total young Lake Sturgeon
released over 14 years

MEMBERSHIP & SUPPORT



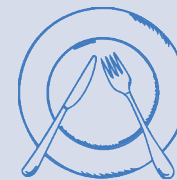
2,400

member households



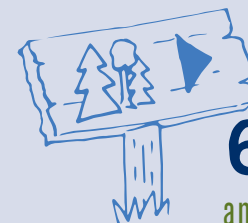
500

free 4th Grade Family
Memberships provided



\$95,000

raised through
Farm to Table dinner



63,000+

annual trail users

It's not the buildings **IT'S ABOUT WHAT THEY MAKE POSSIBLE**



In 2016, Riveredge worked with Kubala Washatko Architects to complete a master facility plan. At the heart of the challenge was this question: “How do we allow more people to learn, visit, and engage at Riveredge while also preserving and protecting the natural sanctuary?” The creation of “educational nodes,” as learning hubs throughout the preserve, became part of the answer.

A generous gift and idea from Phil Hardacre, with support from other kind and meaningful donors, in memory of his wife Connie Hardacre started the realization of the dream of dispersed educational nodes, with **CONNIE'S CLASSROOM**.

In 2019, the new **SUGARBUSH HOUSE** became the first completed project of the launched “Growing Adventures for the Future: the Campaign for Riveredge” capital campaign. Longtime Riveredge supporters Mal, Jill, and Jamie Hepburn, the Hepburn “Bootstrap” Foundation, and Ozaukee Bank’s Gift to the Future Fund made a coordinated gift which made this dream possible. In addition to sap cooking duties, the Sugarbush House has become a vital year-round classroom for school, camp, and adult programs.

The **RIVER OUTPOST** opened in the fall of 2019 and provides a stunning educational and support facility for the Lake Sturgeon restoration project, water educational programs and home to the Watershed Interactive Table. The Fund for Lake Michigan and West Bend Mutual Insurance Company’s Charitable Fund were meaningful partners on this project.

One year later, in the fall of 2020, the **FARM NODE** opened with the completion of a new maintenance building to support critical land restoration and facility work at Riveredge. Parking, restrooms, and improved access open this eastern portion of the land to learners of all ages.

Each building was strategically placed at a previously disturbed site. Costs and carbon footprints were kept to a minimum by using adaptive forestry practices, the help of volunteers when able, and intentional repurposing.

And, the Riveredge “experience” is maintained - small groups of learners, scattered over these 379 acres provides an opportunity to feel alone in the prairies, woods, and wetlands.

We are grateful for all the donors and supporters who have made these projects possible. Together, you have positioned Riveredge for the next 50+ years of growth and impact.



ART ON THE RIVER BANK

COMMUNITY COLLABORATION, PLACE-BASED ART, AND NATURE CAME TOGETHER IN 2019 TO PROVIDE THE FINAL, BEAUTIFUL TOUCHES AT THE NEW RIVER OUTPOST NODE AT RIVEREDGE.

Led by local artist, and a renowned creator of community-based artwork, Sally Duback, over 450 youth and adult community members participated through 10 different events to hand create colorful clay pieces representing their relationship to the Milwaukee River.

The next time you explore the Milwaukee River at Riveredge, see if you can find the eight different sculptures among woods, trails, and hidden buildings. Imagine the hundreds of ideas and hands which went into their creation, and ponder your connection to the river which runs through the region.

We thank the Mary L. Nohl Grant through the Greater Milwaukee Foundation for making this creative work possible!



NATURE + TECHNOLOGY

AS TECHNOLOGY BECOMES MORE INTEGRAL TO OUR LIVES, THE CHALLENGE OF A NATURE CENTER IS TO INCORPORATE TECHNOLOGIES THAT COMPLEMENT THE NATURAL EXPERIENCE, RATHER THAN DISTRACT FROM IT.

The first of its kind Sugarbush App uses augmented reality technology to “grow a Sugar Maple” tree anywhere! Learners discover the inner science of trees both at Riveredge and remotely. This new technology even brought the wonder of the forest to patients staying long term at Children’s Hospital!

The Great Lakes Water Table inside the River Outpost engages students in real life data collection and instantly shares that data with others in a fun and educational way. After returning from field studies in the Milwaukee River and hanging up their wet waders, students compile, report, and discuss their findings by using the Great Lakes Water Table. The table also provides real time updates on the nearby Lake Sturgeon trailer and shares them with learners! When did the sturgeon hatch? What are they eating? What is the survival rate?



And a **SNEAK PEAK!** Thanks to a grant from the Institute of Museum and Library Services, Riveredge will be launching an app in winter 2021/22! Watch for more and find ways to better discover nature at Riveredge and in your backyards! We thank the many focus groups who have helped design this incredible addition: from our teens to area teachers to volunteers.

Landmark Riveredge CONSERVATION EASEMENT

**RIVEREDGE NATURE CENTER IS PROUD TO ANNOUNCE A
CONSERVATION EASEMENT THAT PERMANENTLY PROTECTS
75% OF THE TOTAL PRESERVE FROM DEVELOPMENT.**

The move, completed with assistance from the Milwaukee Metropolitan Sewerage District (MMSD) and The Conservation Fund, ensures this land will remain a natural habitat for plants and animals to flourish, for humans to learn and explore.

“THE WISH OF RIVEREDGE’S FOUNDERS AND DONORS HAS BEEN
FULFILLED AND WE CAN REST ASSURED THAT THIS BEAUTIFULLY
RESTORED NATURAL AREA WILL CONTINUE TO ADD TO THE QUALITY
OF LIFE OF OUR COMMUNITIES FOR GENERATIONS TO COME.”

- Jessica Jens, Riveredge Executive Director



If, at any point in the future Riveredge would be faced with tough decisions and consider selling portions of the property, this document provides legal backing to make that an impossibility. The conservation easement protects against whatever unforeseeable future events may come to pass, and ensures that, in Riveredge's instance, this land will be preserved in perpetuity for conservation and education.



BIOBLITZ



24
HOURS



1,254
SPECIES

Both Milwaukee Public Museum (MPM) and Riveredge staff were pleased to document 1,254 species within 24 hours - the highest number of any of locations surveyed since MPM started its BioBlitz. A playful debate ensued about whether to include Lake Sturgeon, which Riveredge raises onsite for the Return the Sturgeon program.

“RIVEREDGE HAS ENORMOUS RICHNESS”

- Dr. Robert Freckmann, namesake of the Freckmann Herbarium at UW-Stevens Point



536 PLANT SPECIES

Highlights include Small Yellow Lady's-slipper & rare Handsome Sedge



120 SPECIES OF MICROPLANTS

including cyanobacteria, red algae, and several species of euglena in the Vernal Pond



16 SPECIES OF MAMMALS

including humans, the highlight being a Southern Flying Squirrel



21 SPECIES OF FISH

(22 if you count Lake Sturgeon).
Highlights include Brown Trout, Iowa Darter, and Mottled Sculpin



343 SPECIES OF INSECTS

of which 180 were Lepidopterans (moths & butterflies)



31 SPECIES OF LICHENS

which is reported to indicate a “happy forest”



80 BIRD SPECIES SEEN

including Ruffed Grouse and Pileated Woodpecker



RARE SPECIES

4 state threatened species & 2 state species of special concern documented



Accessibility

WALKING THE WALK - IN ALL OF ITS MANY FORMS

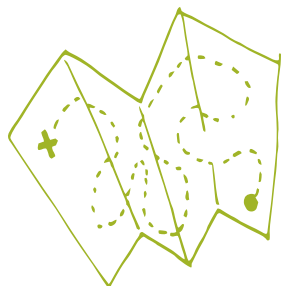
“THIS IS A LIFE CHANGING EXPERIENCE.”

“IT OPENS UP SO MANY POSSIBILITIES.”

“IT ALLOWS PEOPLE TO FOCUS ON WHAT’S
POSSIBLE INSTEAD OF WHAT’S NOT.”

“IT’S AMAZING THAT THEY HAVE THIS OPPORTUNITY FOR PEOPLE.”

- Quotes from all-terrain wheelchair users



We’re reenvisioning our trail network, and working on our trails to accommodate more people on them, such as with our Maple Mama Trail that has been updated with crushed limestone rather than bare soil. Additionally, we’re proving that a 50-year-old restored prairie can learn new tricks by building a more gradual incline gravel trail, in addition to steps, through our oldest restored prairie near the west parking lot.

However you walk out into the wilderness, we want you to be able to enjoy the trails here at Riveredge.



ACCESS ABILITY WISCONSIN PARTNERSHIP

One of the most exciting developments in the past two years has been our partnership with Access Ability Wisconsin (AAW). AAW places all-terrain wheelchairs throughout the state that are free for anyone to checkout and use. Riveredge is the Ozaukee County host site and we’re proud to welcome people to explore all four seasons at Riveredge, and to be able to take this chair for offsite use as well.



Nature in a pandemic

KEEPING THE SANCTUARY OPEN

FOR MANY OF US, NATURE IS WHERE WE FIND OUR SANCTUARY, OUR MOTIVATION, OUR HEALTH. When Covid-19 struck, we were forced with the choice of whether Riveredge trails could and should remain open or whether we'd need to close those experiences to members, families, and students. As neighborhood playgrounds and local parks closed their gates, Riveredge staff scrutinized the science, developed appropriate safety measures, and decided it was vital for the health of our community that we remain open.

In addition to keeping the 379 acres open for those who wanted to get out into the fresh air, we expanded our strategies of education and engagement. When busing classes of students to Riveredge became an impossibility, we brought computers outdoors to meet with classes through videos. When members and longtime friends of Riveredge wanted to continue to learn and connect, but could not gather, we reached out to them virtually with Tea & Topics, Photo Club, Bird Club, and Memory Cafe.

Our Virtual Naturalist Series rallied Riveredge staff to present their diverse knowledge bases across Facebook, YouTube, Instagram, and Twitter. Videos were filmed in home backyards, garden spaces, area green spaces, and of course trailside at Riveredge. Despite the distance, Riveredge staff assessed a gap in access to nature, interaction, and mental health and worked to welcome new people into the Riveredge family with innovative strategies that held conservation at the core.



combined virtual programming videos

34,000+

virtual view engagements

VIRTUAL ENVIRONMENTAL EDUCATION

Inquiry-Based Curriculum and Instruction Manager, Kacey Tait, teaching a virtual Fruits of Fall program



Supporting our

FORMAL EDUCATION SYSTEMS

RIVEREDGE HAS LONG BEEN A HOME FOR EXCEPTIONAL SCIENCE-BASED FIELD TRIP EXPERIENCES. YET THE WORK OF RIVEREDGE AND ITS PARTNERS IS STRIVING TO INSPIRE SYSTEMS CHANGE AS A WAY TO IMPROVE STUDENT LEARNING OUTCOMES, STUDENT AND STAFF HEALTH AND WELLNESS, AND THE FORMATION OF STRONG ENVIRONMENTAL ATTITUDES THROUGH HANDS-ON LEARNING OUTDOORS.

SCIENTIST IN RESIDENCE



The Scientist in Residence (SIR) partnership with local school districts envisions a school culture where the outdoors is interconnected to the foundation of every day, resulting in healthier, happier, more creative, and inspired students.

Each five-year partnership is funded through generous private donors and foundations throughout Wisconsin. In the 2019/20 school year, the program completed its fifth, and final, year in the West Bend School District and its fourth year with the Cedarburg School District. Partnering from the ground-up (instead of a canned, top-down program approach) has led to meaningful results such as increasing staff's comfort levels in teaching in an outdoor setting, improved nature-based learning nodes in school yards, and has also decreased barriers to learning outdoors, such as curriculum development and classroom management.



SIR WEST BEND SCHOOL DISTRICT FINAL REPORT CARD

5 YEAR TOTAL ENGAGEMENT

14,544
STUDENTS

1,804
TEACHERS

5 ELEMENTARY, **1** INTERMEDIATE,
1 MIDDLE, AND **2** HIGH SCHOOLS

566
COMMUNITY MEMBERS





NATURE-BASED FIELD TRIPS.... REMOTELY



When safely transporting students to Riveredge became a major barrier during the pandemic, the education team developed creative ways to bring nature to them. Through a series of live virtual programs, asynchronous learning guides and outreach programs, a total of **32 programs** were adapted allowing students to connect with nature where they are.

TESTING THE WATERS

CONNECTING STUDENTS, TEACHERS, AND SCHOOL COMMUNITIES TO THE ENVIRONMENTAL RESOURCES IN THEIR BACKYARDS, INSPIRING A ROBUST SENSE-OF-PLACE, AND CONTRIBUTING TO REGIONAL WATER QUALITY DATABASES, ARE IMPACTS ACHIEVED THROUGH THE TESTING THE WATERS PARTNERSHIPS.

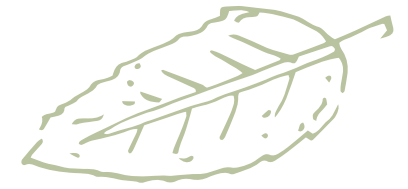
Led by Riveredge Educators and partnering organizations, schools within the Milwaukee River Watershed are trained, supported, and coached to incorporate active water monitoring of the Milwaukee River within their curriculum.

Thanks to support from the NOAA Bay-Watershed and Education Training (B-WET) program, the Testing the Waters school partnership expanded in 2019. Annually, 23 teachers from 17 high schools and their classrooms participate in **water quality testing in the Milwaukee River**. Classes also plan and carry out **place-based service learning projects** such as installing rain barrels, removing invasive plants, and implementing a school litter prevention program.

We are also thankful to Reflo who helped a dream become reality: creating an integrated web map that displays data from more than thirty years throughout the Milwaukee River watershed!



THE RIVEREDGE SCHOOL



Riveredge was founded as the first non-profit nature center in greater Milwaukee. That same trailblazing spirit continues today, with the creation of The Riveredge School: the first nature-based public charter elementary school in our region! Riveredge Nature Center served as the original developer of the school, in partnership with authorization from the Northern Ozaukee School District, and continues to support its ongoing growth.

Riveredge Outdoor Learning Elementary School (ROLES) – or “The Riveredge School” for short – creates a hands-on learning environment where curriculum is brought to life and curiosity is fostered each and every day through time in our natural world. The school community creates a laboratory for outdoor learning which amplifies the outcomes of public education, serves learners of different abilities and needs, fosters a deep connection to the environment, and prepares students for success in school and life. Riveredge School students spend at least 80% of their time outdoors, in all weather and in all seasons.



“MY SON IS THRIVING IN THIS LEARNING ENVIRONMENT!”

– ROLES PARENT

The ultimate vision of the school is to not only serve the community and its students, but also to become a catalyst for outdoor-based learning throughout the region. Already, The Riveredge School has inspired and supported the successful planning of another nature-based, public school in southwestern Wisconsin, Kickapoo Valley Forest School, and receives regular calls of inquiry from educational leaders throughout the nation.

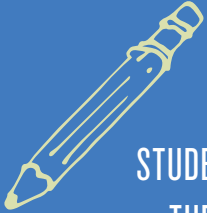
“I LOVE THE FEEL OF BEING
OUTSIDE. I FEEL AT HOME
THERE. IT’S PEACEFUL.”

- 5TH GRADER




THE RIVEREDGE SCHOOL BY THE NUMBERS

2019 
FIRST YEAR OF INSTRUCTION

 70
STUDENTS ENROLLED
THE FIRST YEAR

108 
EVENTUAL MAXIMUM ENROLLMENT

 K-5TH
GRADES

379 
ACRE CLASSROOM
+ 5 INDOOR HOMEBASES

Writing the NEXT CHAPTER



The 50+ year story of Riveredge is full of many glorious chapters. Chapters of innovation, community, friendship, growth, and transformation. Each chapter provides contributions to our communities, to each other, and to the natural world.

In 2015, the Riveredge community wrote a chapter outlining an audacious goal of robust growth and regional contribution. Over those years, the organization doubled in size, growing membership by 100%, increasing participation by 113%, launching regional partnerships, and significantly investing in the restoration and preservation of the natural sanctuary. You were part of this chapter. Together, we reflect and rejoice in these accomplishments.

In fall 2020, the Board of Directors and staff launched a strategic visioning process. In a year marked with unforeseeable global challenges and unparalleled social change which resulted in a world reawakening to the joyful benefits of spending time outdoors, a vision for the next chapter of Riveredge emerged.



THE VISION...

YOU BELONG HERE



Riveredge is a place where you can belong. From the very beginning, Riveredge has formed wonderfully unique communities of people around a shared love for the natural world. Yet, we realize there is work to do to ensure all communities of people feel represented and a sense of belonging.

- **CONNECT:** Focus program development on opportunities to connect people to people through nature
- **DISCOVER:** Engage in robust conversations with organizations to find collaboration opportunities
- **ENGAGE:** Develop programs to engage all communities of people in Riveredge programs
- **INVITE:** Focus on underrepresented backgrounds and not-yet-served groups
- **REMOVE BARRIERS:** Increase accessibility and decrease barriers to provide more opportunity to programs/land/trails

DISCOVERING YOUR INNER SCIENTIST



Science-based, environmental research has long been fundamental to the mission of Riveredge. Over the years, thousands of data points have been collected by staff, volunteers, and students that support regional and national research projects. Yet now, with a changing climate and trust in our scientific community faltering, it's time to bring these efforts to the forefront.

- **RE-INVEST** in conservation research projects
- **ENGAGE:** Integrate scientific research (participation, education, visibility) in program efforts
- **CONNECT:** Collaborate with science-based organizations
- **USE:** Participate in land restoration research & use research to inform restoration activities at Riveredge and throughout the region
- **SOLVE:** Implement programs that use science as a way to solve problems in people's lives

DESTINATION FOR INSPIRATION



Alone, the work of Riveredge will always have limits. Partnered with others, the outcomes are infinite. Recent, robust efforts to integrate time outdoors into our formal education systems are intended to impact the students and inspire systems change. With the foundational work behind us, now is the time to reach out, invite, connect, assist, and inspire.

- **PROGRESS:** Expand work with our school programs to include professional development, teacher-preparation program partnerships, and broad communication of outcomes
- **CONNECT:** Actively participate in state/regional/national environmental/outdoor professional groups
- **SHARE:** Assist other organizations in replicating Riveredge work
- **EVALUATE:** Develop & implement evaluation methods to document outcomes; collaborate with others to contribute to peer-reviewed research projects

NATURE RICH LIFESTYLES



Our Theory of Change inspires participants to first have fun outdoors, then develop a love for nature, which leads to learning about the environment and, finally, becoming stewards of the natural world. Riveredge has focused heavily on creating fun, adventurous programs to encourage more people to go outside. Now, with more people choosing the outdoors as a safe and healthy place, it's time to continue the momentum and increase attention on deliberately inspiring environmental stewardship.

- **EDUCATE:** Connect food production & consumption with healthy natural environments
- **SHARE** Riveredge's "Farm" resource with the community
- **INSPIRE:** Raise awareness of easy, accessible nature-friendly actions
- **ILLUMINATE** the connection between water quality in the Milwaukee River Basin with the choices we make

Financial Statement & Statement of Position

JULY 1, 2018 – JUNE 30, 2019

REVENUE

Annual Fund	\$315,517
Endowment Income	\$269,486
Restricted Gifts/Grants	\$416,300
Other Investment Income	\$65,106
Program Fees	\$325,506
Visitor Fees	\$3,149
Fundraisers	\$132,722
Other Income (Net)	\$53,146

Total Operating Revenue **\$1,580,932**

EXPENSES

Salaries	\$966,662
Benefits	\$212,589
Professional Fees	\$54,744
Supplies	\$34,638
Telephone	\$6,989
Building Expenses	\$42,821
Postage	\$4,157
Equipment & Maintenance	\$60,965
Printing & Publications	\$17,989
Travel	\$24,248
Staff Development & Conferences	\$3,668
Insurance	\$39,358
Membership Dues	\$1,772
Marketing	\$29,593
Grants/Projects	\$63,842
Other Expenses	\$16,897

Total Operating Expenses **\$1,580,932**

ASSETS

Cash & Cash Equivalents	\$4,792,323
Accounts Receivable	\$751,015
Property & Equipment	\$2,576,789
Other Assets	\$326,177
Total	\$8,446,304

LIABILITIES

Accounts Payable	\$8,974
Unearned Revenue	\$141,895
Other Liabilities	\$39,821
Total	\$190,690

Total Liabilities & Net Assets **\$8,446,304**

NET ASSETS

Without Donor Restrictions	\$4,641,501
With Donor Restrictions	\$3,614,113
Total	\$8,255,614



Financial Statement & Statement of Position

JULY 1, 2019 – JUNE 30, 2020

REVENUE

Annual Fund	\$393,073
Endowment Income	\$168,072
Restricted Gifts/Grants	\$584,481
Program Fees	\$293,037
Visitor Fees	\$6,808
Fundraisers	\$118,750
Other Income (Net)	\$96,908

Total Operating Revenue **\$1,661,129**

EXPENSES

Salaries	\$1,028,321
Benefits	\$235,709
Professional Fees	\$43,200
Supplies	\$31,822
Telephone	\$7,185
Building Expenses	\$39,642
Postage	\$1,047
Equipment & Maintenance	\$47,927
Printing & Publications	\$5,061
Travel	\$13,910
Staff Development & Conferences	\$3,626
Insurance	\$47,015
Membership Dues	\$2,467
Marketing	\$35,759
Grants/Projects	\$98,525
Other Expenses	\$19,914

Total Operating Expenses **\$1,661,129**

ASSETS

Cash & Cash Equivalents	\$4,765,661
Accounts Receivable	\$363,698
Property & Equipment	\$3,111,364
Other Assets	\$297,957
Total	\$8,538,680

LIABILITIES

Accounts Payable	\$1,092
Unearned Revenue	\$136,684
Other Liabilities	\$45,113
Total	\$182,889

Total Liabilities & Net Assets **\$8,538,680**

ENDOWMENT STATEMENT

Riveredge Nature Center holds three designated endowment funds: the Jane B. Pettit Fund, Andy Larsen Legacy Fund, and East Property Endowment Fund. As of June 30, 2020, these funds had an approximate combined market value of \$2,907,788. Riveredge has drawn 5% of the combined average market value of the three endowment funds on December 31 of the past three years to cover endowment-designated expenses.

The Center also holds unrestricted investment funds. As of June 30, 2020, these funds had an approximate combined market value of \$1,334,392. Riveredge has drawn 5% of the combined average market value of these funds on December 31 of the past three years to partially cover operating expense for the Center. Additional withdrawals are made from the unrestricted funds to support capital projects and special projects/initiatives. The Riveredge Nature Center Board of Directors approves all uses of these funds.

Complete audited financial statements are available on the Riveredge Nature Center webpage, www.riveredgenaturecenter.org/history/annual-reports.



2018-2019

ANNUAL FUND DONORS

THANK YOU TO ALL OF OUR DONORS - YOUR INVESTMENT ADVANCES THE MISSION OF RIVEREDGE

Gifts received from July 1, 2018, through June 30, 2019

This donor list includes gifts above \$250. A full list is available online. We believe donor information to be complete. If we have made an error, please contact the Development Office to correct our records.

Chief Seattle

\$5,000 and above

A. O. Smith Foundation
Susan Bemis
Robert C. Dohmen
David V. Uihlein Foundation
Ralph Evinrude Foundation
Jude and Chris Ford
Hepburn "Bootstrap" Foundation
Peter and Sue Hitler
Elmore & Alyce Kraemer Charitable Trust
Melitta S. and Joan M. Pick Charitable Trust
Prairie Springs: The Paul Fleckenstein Trust
David and Jennifer Sereno
Lori Steinbach
Judy Van Till
West Bend Mutual Insurance
Company Charitable Fund

Sigurd Olson

\$2,500-\$4,999

The Bruce Krier Charitable Foundation
Coles Family Foundation
Anne and Dean Fitzgerald
John Gassert
Donald and Barbara Gilmore
Daniel & Marty Lyons Charitable Fund
Alexandra Moede
Mike Mullane and Liz Stueck-Mullane
Oscar and Augusta Schlegel Foundation
Michael Uihlein
West Bend Community Foundation's
Clifford A. and Elizabeth M. Nelson Fund
Ziegler Family Foundation Fund
James and Elizabeth Wigdale

Rachel Carson

\$1,000 - \$2,499

Anonymous (4)
Anthony and Kathleen Asmuth
Badger Meter Foundation
Roger Boerner
Jodi Brandser
Joanna Bratt
Bradley and Glenna Brin
Cedarburg Garden Club
Mike and Pat Clemens
Donald Cohen
Jonathan Weston Day
Daniel and Barbara Dedrick
Paul Dye
Albert J. and Flora Ellinger Foundation
Michael and Lois Faley
Robert J. W. Foss
Angela Fowler
Richard and Lisa Fox
Greater Milwaukee Foundation's
Dr. Carl W. Eberbach and
Elisabeth Falk Eberbach Fund
William R. and Charlotte S. Johnson Fund
Jason Haismaier
Philip Hardacre
Evan & Marion Helfaer Foundation
Marilyn John
Mark R. Kaehny
Bob and Sue Karlman
Donna Kindt
Norman and Judy Lasca
Levy Foundation, Ltd.
Ben and Janice Levy
Phoebe R. Lewis
Phyllis and Walter Malzahn Charitable Trust
Charlie and Mary Mayhew
Noel J. Cutright Bird Club
Claire Pfleger

Karen Plunkett
Puelicher Foundation
Kate Redmond
Stacy and Karl Scherzer
Thomas and Kathy Schrader
Suzan Schupp
David and Dawn Wagner
Wendy Walcott
Jack H. and Hester Werner
Sharon Ziegler

Aldo Leopold

\$500 - \$999

American Transmission Company
Anonymous
Patricia Bowne
The Cara Foundation, Inc.
Richard Carter & Carolyn Kenney-Carter
Daniel and S. Beth Davis
Greater Milwaukee Foundation's
Margarete and David Harvey Fund
Paul and Wendy Greeney
D. Clark and Priscilla Higgins
Henry and Bernita Hile
Daniel and Joan F. Jablonski
David and Karen Kinnamon
Jason and Dawn Koenitzer
Robert and Nan Kohls
Jeremy Lambie
Elizabeth Larsen and Scott Hilker
John and Kathleen A. Limbach
Helen L Loewi
Ann Ross Maciver
Robert and Janet Montgomery
Nelson Container Corporation
Layton and Barbara Olsen
Kim and Ann Pemble
Jean and William Schanen
Linda Schmalz

Linda Short

Edmund and Evelyn Stegner
William James Taylor
John and Kine Torinus
Thomas and Mary Uttech
Jeffrey E. and Deborah Wolf
Kent and Kersten Wuebben

John Burroughs

\$250-\$499

Alan and Linda Block
Michael and Lucy Bloedorn
James and Jacquie Branchford
CarePlus
Carol Carpenter
CG Schmidt, Inc.
Mark and Suzanne Clegg
John and Julie Dedrick
Janice M Effinger
Sam and Stefanie Eigen
Janet Eley
Dale and Mary Erickson
Robert L. Feind, Jr. and Mary Feind
Brenton and Raneel Field
Kevin and Eileen Goni
Frederick Haas
Heim's Shoe Store, Inc.
Herb Kohl Philanthropies
Dolores S. Holman
James and Laura Holtz
Thomas and Debbie Jansen
James and Jessica Jens
Ron and Kathy Kabitzke
Paul and Merlynn Kimmel
Mary Pauly Lacy Foundation
Lloyd Lewis
Mark and Barbara Matera
John and Linda Mellowes
Megan and Ted Neitzke IV

Jodi Nienkerk
Jim and Sandy Pape
Scott Proctor & Renee Jones-Proctor
Branislava Radicevic
Richard Miller and Miriam Reading
Mary Ellen Sampe
Mark and Catherine Schowalter
Congressman and Mrs.
F. James Sensenbrenner, Jr.
Dr. Ronald and Pat Stifter
Andrea Monicken and James Stollenwerk
Timothy and Vickie Strattner
Shashank Varma and Rachel Valente Varma
Volunteer Center of Washington County
Leonard and Susan Weistrop
William A. Wernecke, Jr and Susan Wernecke

Matching Gift Companies

Airbnb
Bmo Harris Bank
Northwestern Mutual Foundation, Inc.

Gift in Kind Donors

Bernie's Carpet & Upholstery Cleaning
Kurt Braun
Daniel and S. Beth Davis
Shirley Decker
Tom and Donna Doane
Mary Jo Fuhry
Donald and Barbara Gilmore
Heritage Printing Company
Kohler Company
Outpost Natural Foods

Designated Gifts

Cheryl Combie (Isabel Lillie Scholarship)
Jude and Chris Ford (School Programs)
Trudy Hannam (Microscopes)
C. Edward and Linda Mordy
(Children's Organic Garden)
Daniel Rambo (Research Internships,
Summer Camp Scholarships)
Wendy Stark-Riemer (Children's Organic Garden)
Lori Steinbach (Evaporator, Kubota)

Memorials

Donald and Margaret Arnosti
(Connie and Andy Arnosti)
Kathy and Henry Elssesser
(Charlotte Sundt Johnson)
David Lewis (Mary L. Lewis)
David Peterson (Mary Peterson)
The Raymond Family (Gregory B. Goeller)
Donald and Diana Ryan (Charlotte Johnson)

Project Gifts/Grants

A. O. Smith Foundation
(Water Related Programming)
Aging and Disability Resource Center of
Ozaukee County (Memory Cafe)
American Transmission Company (Orchid
Shade House Temporary Boardwalks)
Anonymous (River Connections)
Greater Milwaukee Foundation's
Fund for Lake Michigan
(Return the Sturgeon Project)
Mequon/Hiram Schmitt Fund
(School Programs - Mequon/Thiensville)
Mary L. Nohl Fund (Milwaukee
River Community-based Art)
Kohler Foundation, Inc. (Family
Nature Club - Sheboygan County)
Milwaukee Metropolitan Sewerage
District (Testing the Waters)
Southeastern Wisconsin Invasive Species
Consortium Inc. (Invasive
Species Management)
Wisconsin Citizen-based Monitoring
Partnership Program (Citizen Science)
Wisconsin Society of Ornithology (Internships)

Community Rivers Project

Greater Milwaukee Foundation's
Fund for Lake Michigan

LUMIN School Partnership

Harold Emch Jr.
Natural Resources Foundation of Wisconsin
Robert W. and Josephine Pieper Foundation, Inc.

Scientist in Residence

Brookby Foundation

Scientist in Residence – Cedarburg School District

Greater Cedarburg Community Foundation
Kent and Kersten Wuebben

Scientist in Residence – West Bend School District

Rick and Joni Parks
Oscar and Augusta Schlegel Foundation
Westbury Bank Charitable Foundation

50th Gala Sponsors

American Companies
Boehlke Bottled Gas Corp.
CG Schmidt, Inc.
Anne and Dean Fitzgerald

Daniel and Sue Haislmaier
HGA Architects & Engineers
Johnson School Bus Service, Inc.
Kieckhafer, Dietzler, Hauser and Hanson LLP
Sara Braun-Knop and Kyle Knop
Delos and Janice Lutton
Joseph and Laura Mantoan (Sauve Terre Farm)
Meadowlark Storage
Morgan Stanley
O'Brien and Gere Engineers, Inc.
RE/MAX UNITED
Lori Steinbach
Marjie Tomter
WEC Energy Group

Bike Ride Sponsors

5 Corners Storage, LLP
Kieckhafer, Dietzler, Hauser and Hanson LLP
Serigraph Inc.
We Energies Foundation
West Bend Mutual Insurance Company

Frothy Forage Sponsors

Kieckhafer, Dietzler, Hauser and Hanson LLP

Giving Tuesday Sponsors

Digital Pollen, LLC
HGA Architects & Engineers
Johnson School Bus

Maple Sugarin' Season Sponsors

Levy & Levy S.C. Attorneys At Law
Port Washington State Bank
Schlossmann's Subaru City

Restoration Field Day Sponsors

Agrecol LLC
Eco-Resource Consulting, LLC
Mequon Nature Preserve
Monches Farm, LLC
Daniel Rambo

STEM Into Nature Sponsors

Balance Studios
GEI Consultants, Inc.
Kohler Company
We Energies Foundation

Student Research Symposium Sponsors

Jaeger-Mellerop Family Charitable Trust
Pheasants Forever Chapter #68o
The Nature Conservancy
Trout Unlimited SE Wisconsin Chapter

WisconsATHON

Anonymous
Thomas Dobesh
Megan and Ted Neitzke IV
George Shoup
Holger and Deanna Sommerfeld
Lori Steinbach

Bequests

Ethel Sievers (Research & Conservation)



2019-2020

ANNUAL FUND DONORS

THANK YOU TO ALL OF OUR DONORS - YOUR INVESTMENT ADVANCES THE MISSION OF RIVEREDGE

Gifts received from July 1, 2019, through June 30, 2020

This donor list includes gifts above \$250. A full list is available online. We believe donor information to be complete. If we have made an error, please contact the Development Office to correct our records.

Chief Seattle \$5,000 and above

A. O. Smith Foundation, Inc.
Susan Bemis
Robert C. Dohmen
Jude and Chris Ford
Greater Milwaukee Foundation's
Fund For Lake Michigan
Joseph and Vera Silber
Family Foundation, Inc.
M.D. Mal and Jill Hepburn
Peter and Sue Hitler
Elmore & Alyce Kraemer
Charitable Trust
Alexandra Moede
Melitta S. and Joan M. Pick
Charitable Trust
Prairie Springs: The Paul
Fleckenstein Trust
Harriet Purtell
David and Jennifer Sereno
Lori Steinbach
Margery Holley Uihlein Fund
Judy Van Till
West Bend Mutual Insurance
Company Charitable Fund

Sigurd Olson \$2,500-\$4,999

Donald and Barbara Gilmore
Reed and Nancy Groethe
Ted and Mary Kellner
Charlie and Mary Mayhew
Oscar and Augusta Schlegel Foundation
Stantec
James and Elizabeth Wigdale
West Bend Community Foundation's
Ziegler Family Foundation Fund

Rachel Carson \$1,000 - \$2,499

Anonymous (4)
Badger Meter Foundation
Roger Boerner
Jodi Brandser
Bradley and Glenna Brin
Joan Burkett
Timothy and Kathy Carr
Cedarburg Garden Club
Mike and Pat Clemens
Coles Family Foundation
Jonathan Weston Day
Daniel and Barbara Dedrick
Janice M Effinger
Harold Emch Jr.
Michael and Lois Faley
Susan Falkman
Anne and Dean Fitzgerald
John Gassert
Greater Milwaukee Foundation's
Dr. Carl W. Eberbach and
Elisabeth Falk Eberbach Fund
Thomas and Debora Jansen Fund
John F. Harbeck
Philip Hardacre
David and Margarete Harvey
Marilyn John
William Johnson
Mark R. Kaehny
Bob and Sue Karlman
Donna Kindt
Norman and Judy Lasca
Nancy Laskin
Dan and Martha Lyons
Phyllis and Walter Malzahn
Charitable Trust
Jeffrey and Barbara Miller
Mike Mullane and Liz Stueck-Mullane

Noel J. Cutright Bird Club
Kim and Ann Pemble
Pieper Electric, Inc./Ideal Mechanical
Plunkett Family Foundation
Puelicher Foundation
Suzan Schupp
Mike and Jenny Terrill
Michael Uihlein
Wendy Walcott
Jack H. and Hester Werner
Sharon Ziegler

Aldo Leopold \$500-\$999

Anonymous
Anthony and Kathleen Asmuth
Patricia Bowne
Richard Carter & Carolyn Kenney-Carter
Daniel and S. Beth Davis
Angela Fowler
Kathryn Jeans Glaser
Greater Cedarburg Foundation's
JSA Foundation Fund
Greater Milwaukee Foundation's
Senn Family Fund
Paul and Wendy Greeney
D. Clark and Priscilla Higgins
Henry and Bernita Hile
Daniel and Joan F. Jablonski
Paul and Merlynn Kimmel
David and Karen Kinnamon
Robert and Nan Kohls
Helen L Loewi
Ann Ross Maciver
Nelson Container Corporation
Linda Schmalz
Linda Short
Graham and Susie Taylor
William James Taylor

Thomas and Mary Uttech
David and Dawn Wagner
Jeffrey E. and Deborah Wolf
Kent and Kersten Wuebben

John Burroughs \$250-\$499

Martha Banning
Edward and Janet Beimborn
Robert and Lynne Bergschultz
Alan and Linda Block
Michael and Lucy Bloedorn
Virginia Bolger
James and Jacquie Branchford
Scott and Carol Campbell
CarePlus
Carol Carpenter
Jennifer Clearwater
Mark and Suzanne Clegg
Ann and Doc Cornwell
Bruce C. Davidson
Timothy and Kathy Ehlinger
Janet Eley
Dale and Mary Erickson
Vickie and Alan Fairchild
Robert L. Feind, Jr. and Mary Feind
Kevin and Eileen Goniou
Heim's Shoe Store, Inc.
Herb Kohl Philanthropies
James and Laura Holtz
Rebecca Jewell
G. Frederick Kasten, Jr. and Susie Kasten
Gary and Susan Lange
Lloyd Lewis
Mark and Barbara Matera
Jim and Sandy Pape
Betty Philipps
George and Judi Prescott
Richard Miller and Miriam Reading

Kate Redmond
Thomas Edward Rogers
Mary Ellen Sampe
Mark and Catherine Schowalter
Congressman and Mrs.

F. James Sensenbrenner, Jr.
Holger and Deanna Sommerfeld
Dr. Ronald and Pat Stifter
Andrea Monicken and
James Stollenwerk
Timothy and Vickie Strattner
Leonard and Susan Weistrop
William A. Wernecke, Jr.
and Susan Wernecke
Amanda and Zach Zopp

Matching Gift Companies

Amazonsmile Foundation
Bmo Harris Bank
Northwestern Mutual Foundation, Inc.

Gift in Kind Donors

Bernie's Carpet & Upholstery Cleaning
Cedarburg Overhead Door Co.
Heritage Printing Company
Kapco Metal Stamping
Outpost Natural Foods
Lori Steinbach
John Wellinghoff

Designated Gifts

Anonymous (Trail Signage)
Jude and Chris Ford (School Programs)
M.D. Mal and Jill Hepburn (Barn Dance)
Mary Beth Mahoney (Isabel
Lillie Scholarship Fund)
C. Edward and Linda Mordy
(Children's Organic Garden)
Linda and Jock Mutschler (Washington

County Family Nature Club)
Ryan and Rebecca Sobel
(Summer Camp Scholarships)
Lori Steinbach (Buildings & Grounds)

Memorial Gifts

David and Regula Arnosti
(Connie and Andy Arnosti)
Nancy Arnosti
(Connie and Andy Arnosti)
Judith Bodi (Steve Bodi)
The Brin Family (Edith Brin)
Coles Family Foundation
(Elliot and Marcia Coles)
Mark Eppli and Eliza Webb
(Donald Cohen)
Anne and Dean Fitzgerald
(Alex Martin)
Melissa Hale (Thomas and
Dorothy Hale)
William Hinton and Sharon
Simons (Charlotte Ruenzel)
Dolores S. Holman (Claire Pflieger)
Mid-America Real Estate
Wisconsin (Donald Cohen)
Kate Muth (Donald Cohen)
William Oberlink (Charlotte Ruenzel)
David Peterson (Mary Peterson)

Project Gifts/Grants

A. O. Smith Foundation, Inc.
(Water Related Programming)
Aging and Disability Resource Center
of Ozaukee County (Memory Cafe)
James E. Dutton Foundation, Inc.
(Rusty Patch Bumblebee)
Commerce State Bank
(Membership Match)
Greater Milwaukee Foundation's
Fund For Lake Michigan
(Return the Sturgeon)
Mequon/Hiram Schmitt
Fund (School Programs -
Mequon/Thiensville)
Junior Woman's Club of Mequon-
Thiensville (School Programs -
Mequon/Thiensville)
Milwaukee Metropolitan Sewerage
District (Testing the Waters)
Natural Resources Foundation of
Wisconsin's Norma &
Stanley DeBoer Quiet Trails
Fund (Trail Improvements)
Nonprofit Management Fund
(DEI Training)

Stantec (Membership Match)

Community Rivers Project

Natural Resources Foundation of
Wisconsin's C.D. Besadny
Conservation Fund
Wisconsin Coastal Management
Program

Research & Conservation

Green Bay Packers Foundation
Pheasants Forever Chapter #680
We Energies Foundation

LUMIN School Partnership

Bader Philanthropies
Greater Milwaukee Association
of Realtors Youth Foundation
Charles D. Jacobus Family Foundation
Natural Resources Foundation
of Wisconsin
Robert W. and Josephine Pieper
Foundation, Inc.

Scientist in Residence

Antonia Foundation, Inc.
Brookby Foundation
FDL Area Foundation
The Parks Family Charitable Fund
Oscar and Augusta
Schlegel Foundation
Westbury Bank Charitable Foundation

Bike Ride Sponsors

5 Corners Storage, LLP
JL Business Interiors
Kieckhafer, Dietzler, Hauser
and Hanson LLP
Kiwanis Club of West
Bend, Early Risers
Pacific Cycle
Lori Steinbach
West Bend Mutual
Insurance Company

Farm Dinner Sponsors

Ansay & Associates LLC
Reed and Nancy Groethe
CG Schmidt, Inc.
Daniel and Barbara Dedrick
HGA Architects & Engineers

Organic Valley
Ramboll Americas
Margery Holley Uihlein Fund

Frothy Forage Sponsor

Kieckhafer, Dietzler, Hauser and
Hanson LLP

Maple Sugarin' Season Sponsors

Port Washington State Bank
Schlossmann's Subaru City

Restoration Field Day Sponsors

Agrecol LLC
Johnson's Nursery, Inc.

Pheasants Forever Chapter #680
Stantec
We Energies Foundation

STEM Into Nature Sponsors

Kohler Company
We Energies Foundation

Student Research

Symposium Sponsors
Jaeger-Mellerop Family
Charitable Trust
The Nature Conservancy
Pheasants Forever Chapter #680
Trout Unlimited SE Wisconsin Chapter

We Energies Foundation
WI Section - American Institute
of Professional Geologists

Sturgeon Fest Sponsors

Bass Pro Shops
Greater Milwaukee Foundation's
Fund For Lake Michigan
Stantec
We Energies Foundation
Wisconsin Coastal
Management Program

Bequests:

Robert Kohls



CAPITAL CAMPAIGN DONORS

THROUGH JUNE 30, 2020

Water Guardian

\$500,000 to \$999,999
M.D. Mal & Jill Hepburn
Riveredge Board Discretionary Fund

Adventure Seeker

\$250,000 to \$499,999
West Bend Mutual Insurance
Company Charitable Fund

Naturalist

\$100,000 to \$249,999
Fund for Lake Michigan
The Hitler Family
The Bruce Krier Charitable
Foundation

Lori Steinbach
We Energies Foundation
Sharon Ziegler

Preservationist

\$50,000 to \$99,999
Anonymous
Edward & Harriet Purtell, Jr.
Joan Spector
Ziegler Family Foundation

Explorer

\$25,000 to \$49,999
Dan & Sue Haislmaier
Institute of Museum &
Library Services
Stuart Parsons

Margery Holley Uihlein
Jack & Hester Werner
Barbara Wilson

Protector

\$15,000 to \$24,999
Daniel & Sarah Cohen In
Memory of Donald V. Cohen
Mike & Lois Faley
Dean & Anne Fitzgerald
Philip Joseph Hway
James & Mary LaVelle
Daniel & Martha Lyons
William James Taylor

Steward

\$5,000 to \$14,999
The Brin Family In Memory
of Edith Brin
Daniel & Barbara Dedrick
Rocky & Julie Dedrick
Albert J. & Flora H. Ellinger
Foundation, Inc.
Ralph Evinrude Foundation
Chris & Jude Ford
Richard & Lisa Fox
Reed & Nancy Groethe
Tom & Deb Jansen
Jessica & James Jens
Fred & Susie Kasten
Ted & Mary Kellner
Allan C. Kieckhafer Charitable Fund
Mary Kohler

Elizabeth Larsen
Robert & Janet Montgomery
John & Jennifer Rothstein
State Bank of Newburg
Kevin & Linda Steiner
David V. Uihlein Foundation

Camper

\$2,500 to \$4,999
Kohler Company (In-Kind)
Kim & Ann Pemble
Dawn & Dave Wagner Family
Wright Brothers Fund

Other Donors

Timothy & Kathy Carr
Jennifer Clearwater
Daniel & S. Beth Davis
Natalie Dorler & Eric Hyde
Timothy Ehlinger
Drew & Tina Elgin
John S. Hoff Fund
Rebecca Jewell
David & Marion Meissner
Barbara Pelton
Port Washington-Saukville
Rotary Club
Bob & Lyn Slater
Sarah & Charles Slavin
Mary Stanley
WEC Energy Group



RIVEREDGE
NATURE CENTER